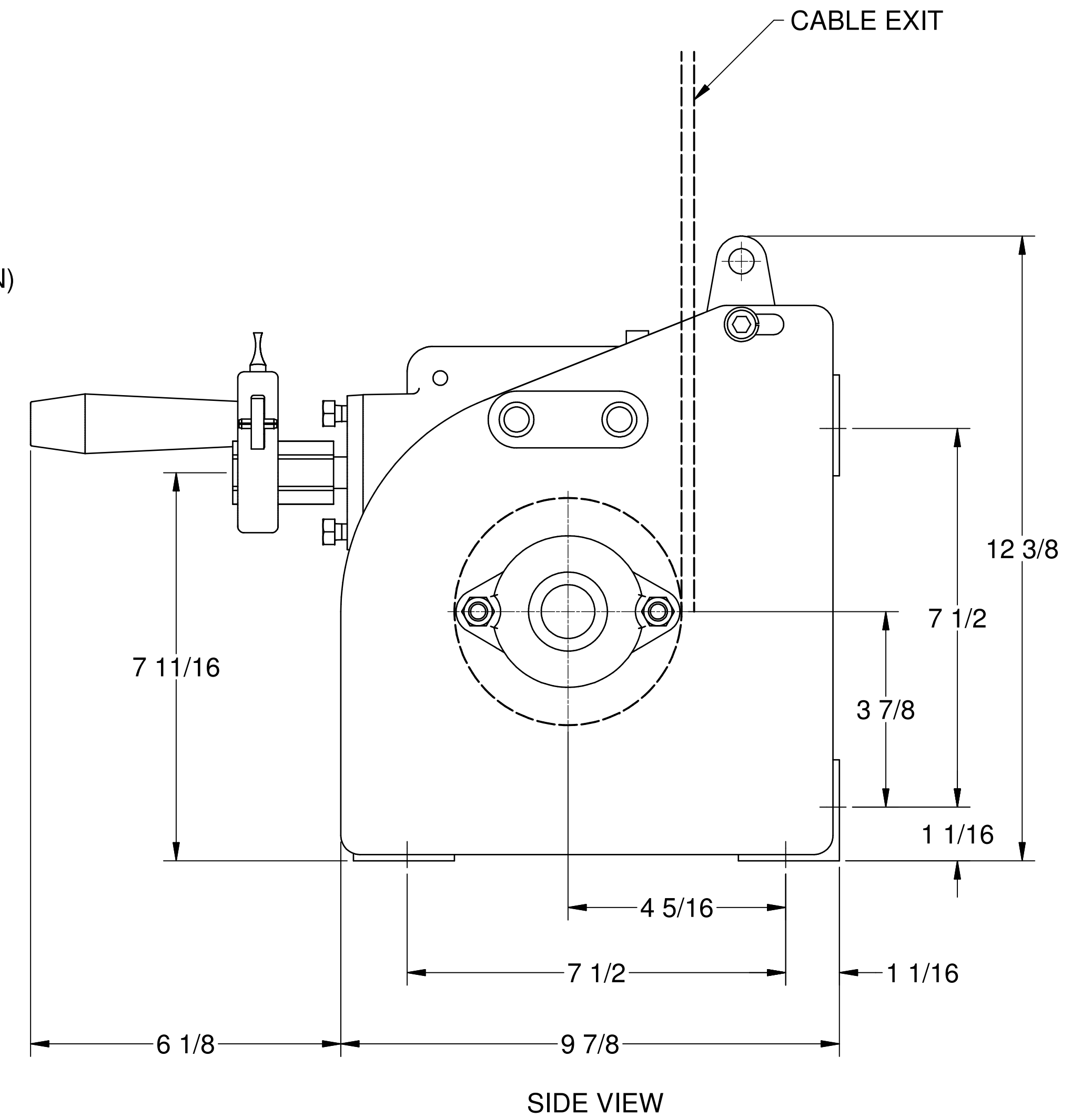
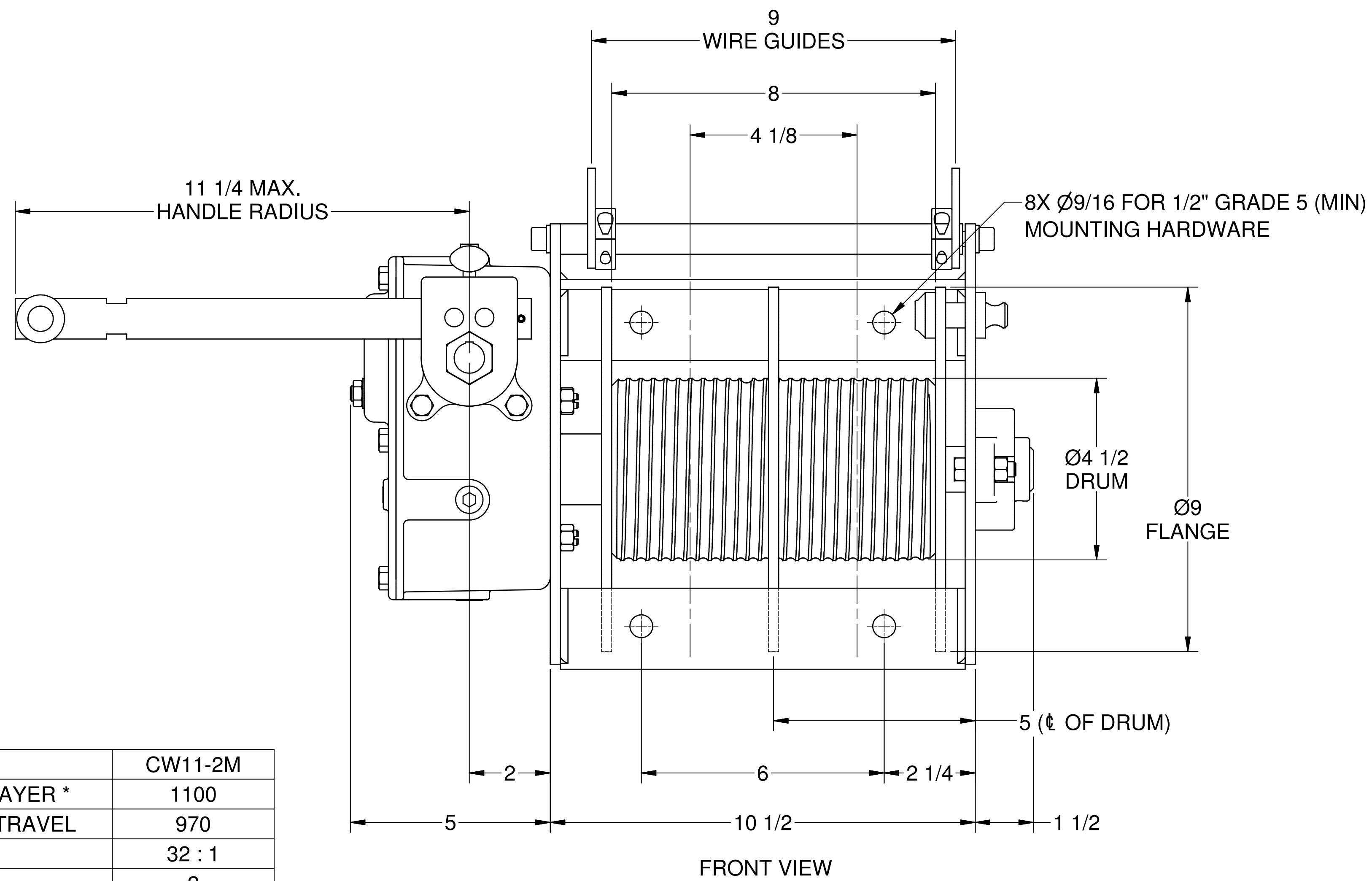


NOTES:

1. USE STANDARD STOP SLEEVES OR SWAGED BALL ENDS TO ANCHOR WIRE ROPE.
2. KEEP FOUR (4) WRAPS OF WIRE ROPE WOUND ON DRUM AT ALL TIMES TO SERVE AS ANCHOR WRAPS.
3. INSTALL SUPPLIED BREATHING PLUG AFTER INSTALLATION. SEE OWNERS MANUAL FOR DETAILS.
4. CONTACT FACTORY FOR NON-STANDARD REQUIREMENTS.



	CW11-2M
WORKING LOAD LIMIT - 1ST LAYER *	1100
WORKING LOAD LIMIT - MAX TRAVEL	970
GEAR RATIO	32 : 1
NUMBER OF HAUL LINES	2
WIRE ROPE (GROOVE) SIZE	Ø 1/4"
MAXIMUM TRAVEL **	40 FT
D : d RATIO	18.6
TYPICAL HANDLE EFFORT	26 LBS
FAIL SAFE BRAKE	STANDARD
DESIGN FACTOR	8 : 1
WEIGHT	73 LBS

* DRILL-DRIVE OPERATION BASED ON DRILL RATED FOR 10 AMPS AT 350 RPM.

** GREATER TRAVEL POSSIBLE AT REDUCED LOAD RATINGS, CONTACT FACTORY.

NOT FOR CONSTRUCTION

THIS PRINT IS THE PROPERTY OF THERN AND MUST NOT BE REPRODUCED EITHER IN FULL OR IN PART WITHOUT WRITTEN APPROVAL BY THERN.		TSE THERN STAGE EQUIPMENT		5712 INDUSTRIAL PARK ROAD WINONA, MN 55987 PHONE 1-800-553-2204 FAX 1-507-454-5282	
DESCRIPTION MANUAL CLEW WINCH				TOLERANCES UNLESS SPECIFIED FRAC. ± 1" ANGLE ± 5" DO NOT SCALE DRAWING	
MODEL CW11 SERIES				DRAWING NUMBER D3453	
DRAWN BY JCA	DATE 9/14/2009	WEIGHT N/A	SCALE NTS	REVISION	SHEET 1 OF 1