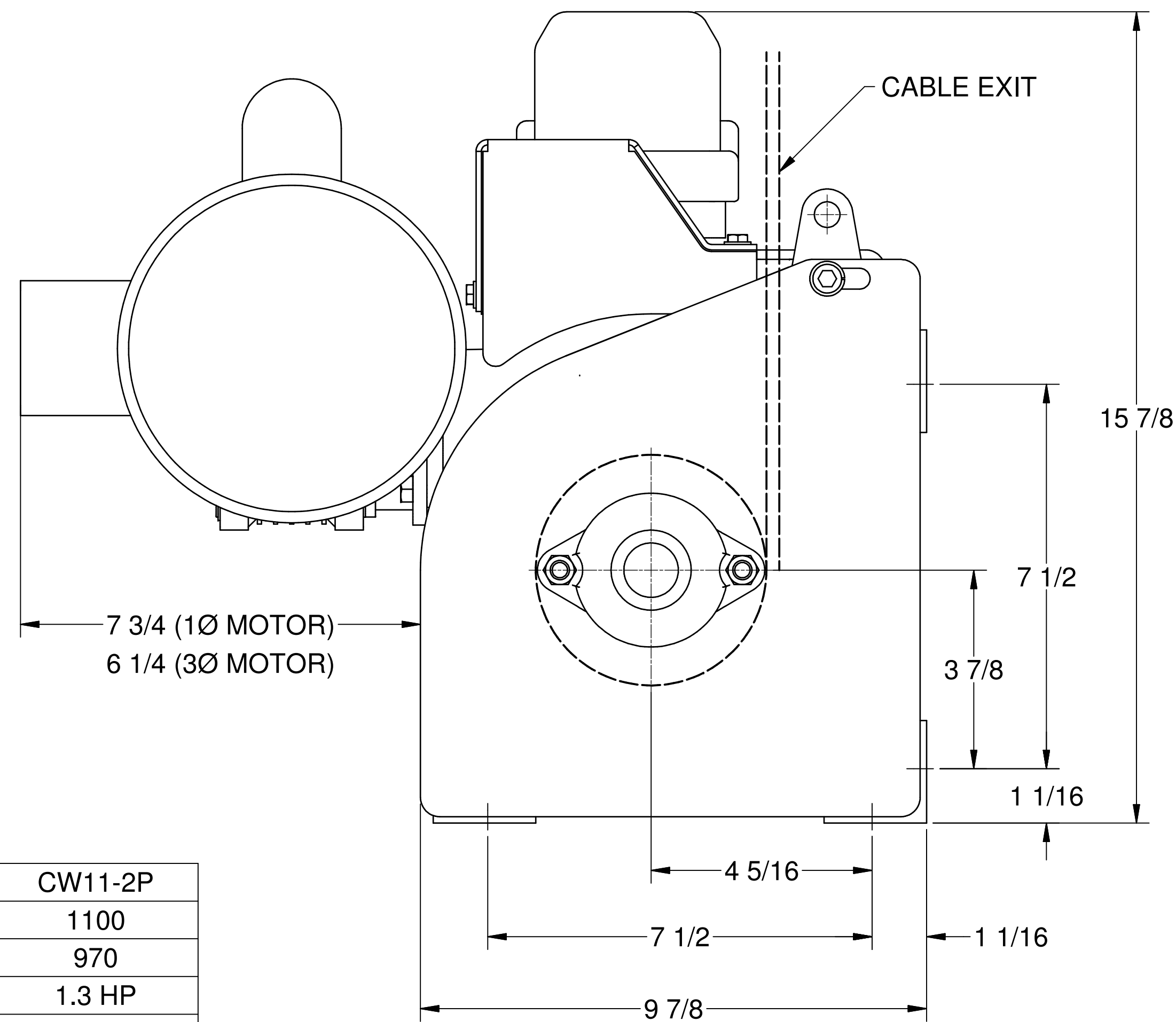
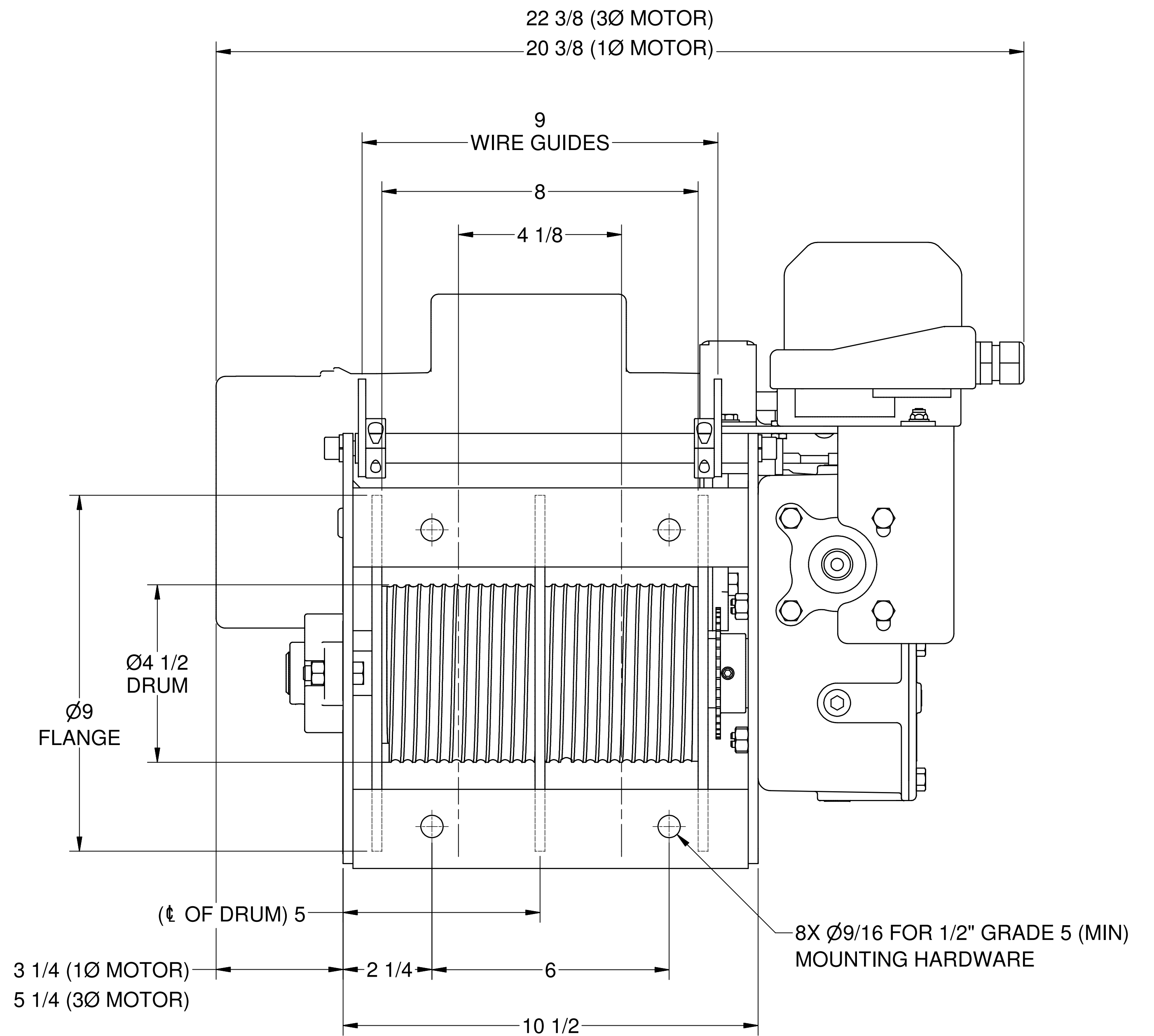


NOTES:

1. USE STANDARD STOP SLEEVES OR SWAGED BALL ENDS TO ANCHOR WIRE ROPE.
2. KEEP FOUR (4) WRAPS OF WIRE ROPE WOUND ON DRUM AT ALL TIMES TO SERVE AS ANCHOR WRAPS.
3. INSTALL SUPPLIED BREATHER PLUG AFTER INSTALLATION. SEE OWNERS MANUAL FOR DETAILS.
4. CONTACT FACTORY FOR NON-STANDARD REQUIREMENTS.



SIDE VIEW



REAR VIEW

	CW11-2P
WORKING LOAD LIMIT - 1ST LAYER	1100
WORKING LOAD LIMIT - MAX TRAVEL	970
MOTOR - 1Ø, 115 VAC	1.3 HP
MOTOR - 3Ø, 208 VAC	1.5 HP
FULL LOAD AMPS (115 VAC)	15.8
FULL LOAD AMPS (208 VAC)	5.5
TOTAL GEAR RATIO	160 : 1
NUMBER OF HAUL LINES	2
WIRE ROPE (GROOVE) SIZE	Ø1/4"
MAXIMUM TRAVEL **	40 FT
D : d RATIO	18.6
LINE SPEED	13 FPM
LIMIT SWITCH	4 POSITION
REDUNDANT FAIL SAFE BRAKES	STANDARD
DESIGN FACTOR	8 : 1
WEIGHT	125 LBS

* SPECIFY VOLTAGE

** GREATER TRAVEL POSSIBLE AT REDUCED LOAD RATINGS, CONTACT FACTORY.

NOT FOR CONSTRUCTION

THIS PRINT IS THE PROPERTY OF THERN AND MUST NOT BE REPRODUCED EITHER IN FULL OR IN PART WITHOUT WRITTEN APPROVAL BY THERN.		TSE THERN STAGE EQUIPMENT		5712 INDUSTRIAL PARK ROAD WINONA, MN 55987 PHONE 1-800-553-2204 FAX 1-507-454-5282	
DESCRIPTION POWER CLEW WINCH			TOLERANCES UNLESS SPECIFIED FRAC. ± 1" ANGLE ± 5" DO NOT SCALE DRAWING		
MODEL CW11 SERIES			DRAWING NUMBER D3454		
DRAWN BY JCA	DATE 9/14/2009	WEIGHT N/A	SCALE NTS	REVISION	SHEET 1 OF 1