

FIRE VENT CLOSURE WINCH

Fire Vent Closure Winches solve the unique requirement of closing, testing and releasing spring operated fire vents.

Fire vents are required in most theatres and in many other multi-story structures. Currently, many fire vents are operated using hand winches or other types of equipment not specifically designed for this use. Testing and resetting fire vents is a difficult challenge. Frequently, vents are not tested as often as they should be. The Fire Vent Closure Winch from Thern is a unique product specifically designed to solve these problems. Thern's FVC-1000 provides a way to securely close fire vents, test and reset as required, and release in the event of a fire.

KEY BENEFITS:

Hassle free testing using the test arm, which releases the band brake and allows the fire vent to spring open without breaking the ETL® (Electro Thermal Link). After testing, the winch is easily operated to close and reset the fire vent.

Easy to install in convenient easy to reach locations at stage level, as specified or required by code. The winch can be mounted to a horizontal base or to the wall.

Innovative design provides holding tension through an adjustable band brake, connected to an ETL®. In the event of a fire the ETL® is broken and the brake is released, allowing the fire vent to open.



Model FVC-1000 shown in operating mode with ratchet engaged. Wire rope must be purchased separately.

Reliable and secure operation with solid metal guards to protect key components and help protect against injury. The ETL® access panel can be locked, securing the handle in the stored position, to prevent unauthorized operation.

The band brake adjusts for wear to provide load holding tension to keep fire vents closed.



The test arm is pulled down to release the fire vent doors without breaking the ETL®.



The access panel can be locked closed, preventing unauthorized operation.

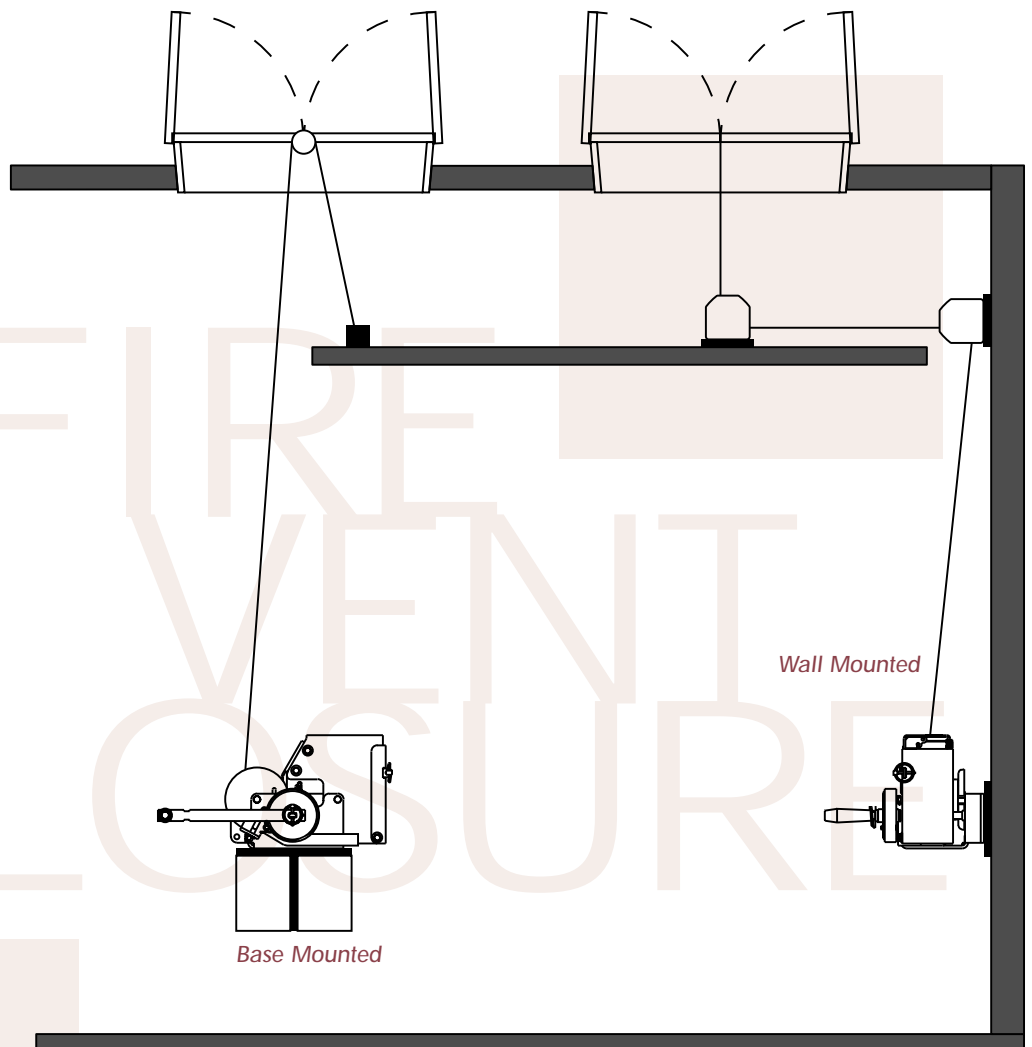


When fire vent is securely closed the handle is removed and stored in the frame.

KEY FEATURES:

- Band brake adjusts for wear to provide adequate braking tension to seal and secure fire vents.
- Spring loaded ratchet provides positive load control for closing fire vents.
- Removable handle stores in frame compartment for security.
- Test arm provides convenient method for testing fire vent operation.
- Designed for use with standard ETL®.
- Hinged access panel locks closed to prevent unauthorized operation.
- Spur gears are machine cut from solid steel for long lasting service.
- Dichromate black plated finish protects against corrosion.
- Bronze and radial ball bearings provide smooth and efficient operation.
- Solid steel gear covers and guard plates protect gears and help prevent injuries.
- Large diameter drum minimizes wire rope wear.
- Designed for horizontal base or wall mounting.
- Two year limited warranty.

FVC-1000 General Installation

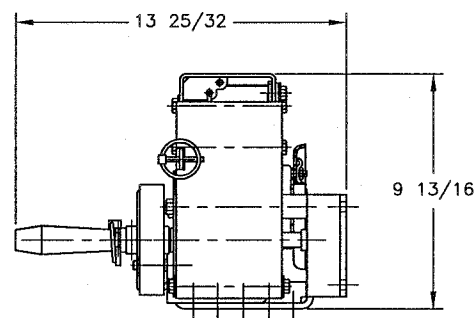
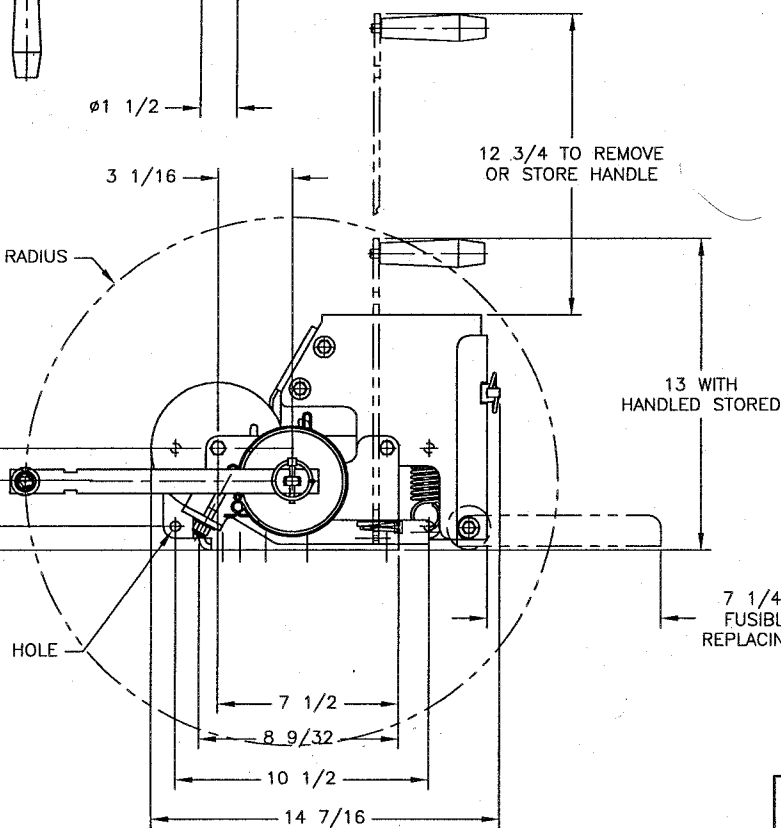
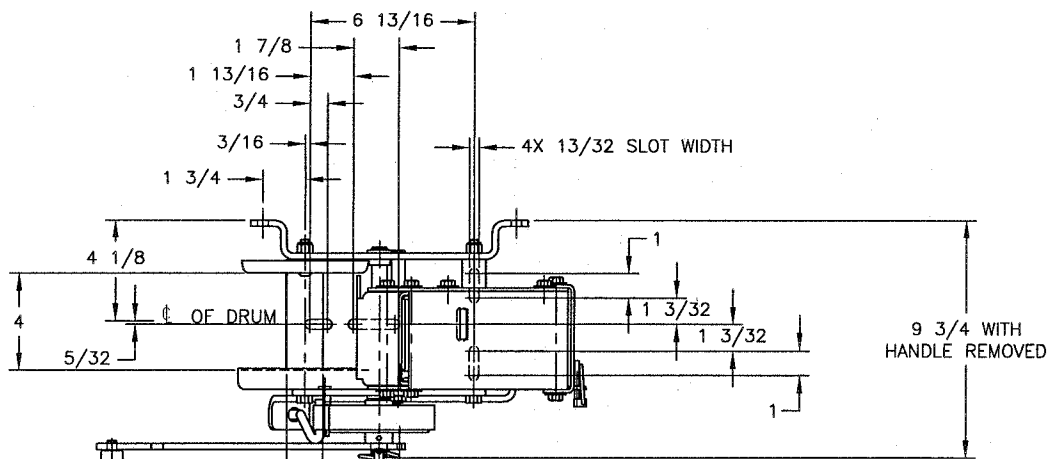


SPECIFICATIONS

Model	Single Line Load Rating	Double Line Load Rating	Wire Rope Diameter	Single Line Travel Distance	Gear Ratio	Ultimate Design Factor	Brake Holding Torque
FVC-1000	1000lb	2000lb	3/16"	32'	2.85:1	3.5:1	200%

Patent and UL approval pending

- A. Winch shall be as manufactured by Them, Inc., Model FVC-1000.
- B. Winch shall have a two year warranty covering non-wear items.
- C. Winch shall have a single line rating of 1000 pounds and a double line rating of 2000 pounds, with an ultimate design factor of 3.5:1.
- D. Winch drum shall have a storage capacity of 32 feet of 3/16 inch diameter wire rope.
- E. Spur gears shall be machine cut from solid steel with a gear ratio of 2.85:1. A spring loaded ratchet shall interact with the pinion gear to provide positive load control when engaged and free-spooling pay-out of wire rope when disengaged.
- F. Winch shall be equipped with a band brake that interacts with a standard ETL[®] (Electro Thermal Link) to set and hold fire vent doors closed, and automatically release them in the event of a fire. The band brake shall be adjustable for wear and have a holding torque of up to 200%.
- G. Winch shall be equipped with a test arm which releases the band brake, allowing fire vent doors to open without breaking the ETL[®].
- H. A solid steel gear cover shall protect the large drum gear. Solid steel guards shall enclose the ETL[®] and include a hinged access panel that can be locked closed to prevent unauthorized use.
- I. Operating handle shall be removable and winch shall be designed to provide secure storage of the handle when not in use.
- J. Winch drum shall be equipped with a tie clip style fastener to securely anchor wire rope.
- K. Bronze bushings shall be used on the drum shaft and counter gear shaft.
- L. Bent steel frame shall allow installation to horizontal base or wall surface without modification.
- M. Winch shall have a dichromate plated finish to protect against corrosion.



A	12/4/01	DF	SEE ECH 3928
REV	DATE	ECN BY	DESCRIPTION
			REVISION

DRAWING FOR PRODUCTION APPROVAL

MANUFACTURE WILL NOT BEGIN UNTIL APPROVED DRAWING IS RETURNED TO THERN INC.	COMPANY	_____
	DATE APPROVED	_____
	PRINT NAME	_____
	AUTHORIZED SIGNATURE	_____

RETURN TO:
THERN INC.
 6718 INDUSTRIAL PARK ROAD
 PO BOX 347
 WINONA, MN 55989
 PHONE (507) 464-8998
 FAX (507) 464-5282

TOLERANCES UNLESS OTHERWISE SPECIFIED FRAC. ± 1" ANG. ± 5" DO NOT SCALE DRAWING	DESCRIPTION	MODEL	FINISH	PART NO	SHEET
	DIMENSIONAL DRAWING	FVC-1000		SC4076	1
	THIS PRINT IS THE PROPERTY OF THERN, INC. AND MUST NOT BE REPRODUCED EITHER IN FULL OR IN PART WITHOUT WRITTEN APPROVAL BY THERN, INC.	DRAWN BY	SCALE	DATE	OF
		DF	1=4	4/26/01	1



PART NO SC4076

SHEET 1 OF 1