

ROLL DROPS



Thern Roll Drops provide a convenient method for lowering, raising and storing screens, backdrops, and other types of soft good materials. Thern can provide roll drops up to 48 feet in length. Empty drum roll drops weigh between 300 and 750 pounds, depending on length and configuration. Speeds, drop heights, and lengths can all be modified to suit specific needs.

Controls are sold separately for single speed or variable speed. DMX control configurations are also available.

- Motor is 115/230 or 208/230/460 volt three phase, 60 cycle, TEFC, reversible, continuous duty.
- Worm gears provide low backdrive efficiency for secure load control.
- Gearcase totally encloses gears. Gears operate in an oil bath for continuous lubrication to minimize wear.
- Motor brake is a spring set, electrically released motor mounted disc brake.
- Self-aligning flange style ball bearings with cast housing for smooth rotation.
- Welded aluminum drum sized to limit deflection.
- Steel frames capture drum ends for security.
- Durable satin black enamel paint finish resists corrosion.
- Designed for upright or under-hung installation.
- Options include: speed and load changes, voltage changes, modified drum widths or diameters, manual overrides, variable speed motors and controls, DMX controls.
- Compatible with variable speed drives.
- Controls must be purchased separately.
- Two-year limited warranty.



Chain couplers provide easy installation with alignment tolerances of up to 2° to ensure level rotation of drum.

Rotary limit switch is coupled to the outboard shaft on the reducer to limit travel in both directions.



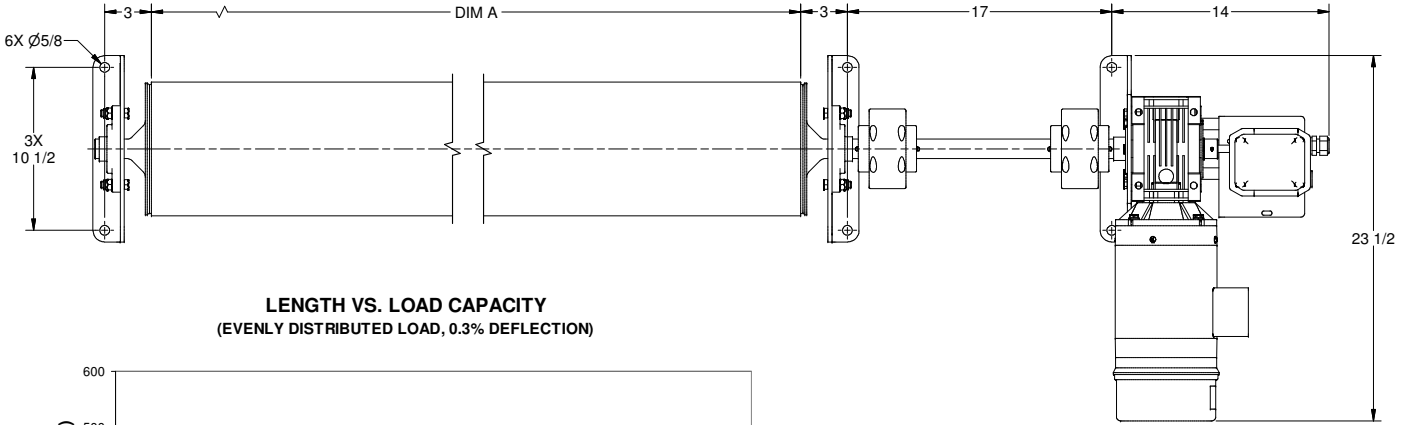
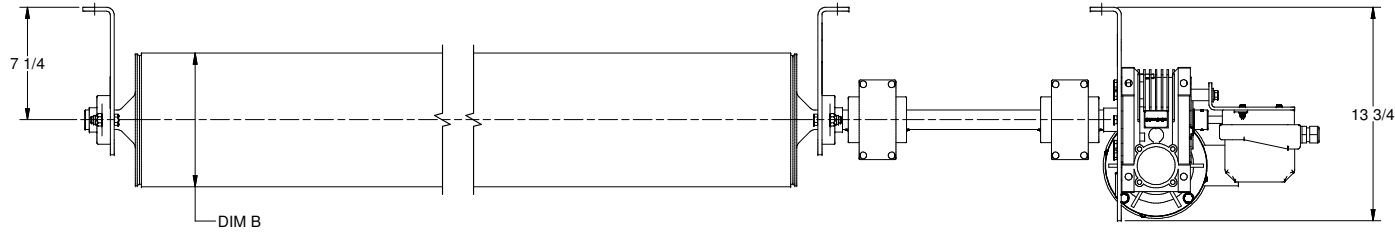
Typical Configurations ¹

length of drum	maximum soft goods width ²	diameter of drum	motor HP	gear ratio	approx. drum RPM	approx. travel speed	height of drop ³	soft goods thickness ³	maximum soft goods weight ³
24 ft	22 ft	5.56 in	.75 hp	80:1	22 rpm	30-40 fpm	40 ft	1/8 in	330 lb
36 ft	34 ft	8.63 in	1 hp	120:1	15 rpm	30-40 fpm	40 ft	1/8 in	510 lb

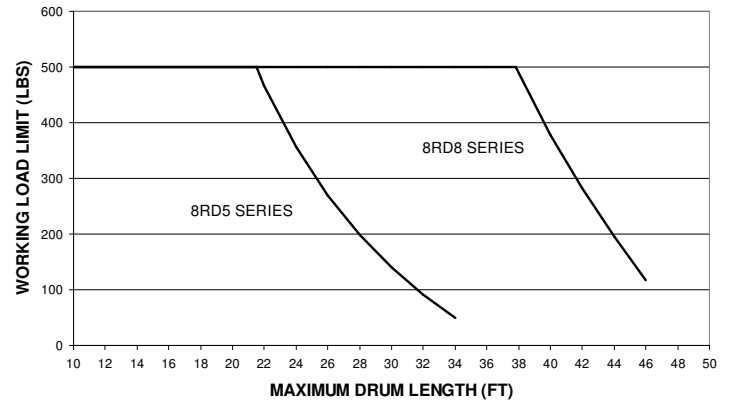
¹ Roll Drops can be easily custom configured to meet specific needs. Configurations shown are for reference only. Lengths up to 48 feet available.

² Width of soft goods is measured parallel with drum, based on 12 inches of clearance on each end of drum.

³ Different heights and thicknesses of soft goods are easily accommodated, limited by total weight of soft goods and clearance requirements. Weight shown is based on 15 pounds per linear foot.



LENGTH VS. LOAD CAPACITY
(EVENLY DISTRIBUTED LOAD, 0.3% DEFLECTION)



STANDARD SPECIFICATIONS
CONTACT FACTORY FOR ANY SPECIAL REQUIREMENTS

MODEL	RD5 SERIES	RD8 SERIES
* MAX LENGTH (DIM A)	34 FT	46 FT
* WORKING LOAD LIMIT	500 LBS	500 LBS
STANDARD MOTOR	1.3 HP, 120V, 1Ø	1.3 HP, 120V, 1Ø
STANDARD GEAR RATIO	60 : 1	100 : 1
DRUM SPEED	42 FPM	40 FPM
LIMIT SWITCH	4 POSITION	4 POSITION
BRAKE	ELECTRIC	ELECTRIC
DIM A	SPECIFY	SPECIFY
DIM B	Ø5.56	Ø8.63
BASE WEIGHT	127 LBS	137 LBS
PLUS WEIGHT PER FT (DIM A)	5.0 LBS	9.8 LBS

* LENGTH AND WORKING LOAD LIMITS VARY BASED ON APPLICATION. SEE LENGTH VS. LOAD CAPACITY CHART OR CONTACT FACTORY.

TOLERANCES UNLESS OTHERWISE SPECIFIED: X .000 Ø .000 X .015 X .015 X .015 X .015	DESCRIPTION LITERATURE DRAWING	WEIGHT	TREAT	PART NO.	REGION
FINISHES HOLES FINISH 1 USE REMOVE ALL BURRS DO NOT SCALE DRAWING	MODEL RD SERIES	DRAWN BY JCA	SCALE 1:4	DATE 10/27/2008	DRAWING D3337
<p>THIS PRINT IS THE PROPERTY OF THERN, INC. AND MUST NOT BE REPRODUCED EITHER IN FULL OR IN PART WITHOUT WRITTEN APPROVAL BY THERN, INC.</p>					
<p>THERN 8715 INDUSTRIAL PARK ROAD P.O. BOX 947 WILCOX, AK 99607 PHONE 1-907-668-2886 FAX 1-907-668-2832</p>					